

WorldView Elevation Suite



Accurate elevation models are key building blocks for successful exploration, engineering, land management, and simulation. DigitalGlobe's WorldView Elevation Suite provides a full perspective for your project area, bundling a highly accurate digital elevation model (DEM) derived from a WorldView-1 and WorldView-2 stereo pair with ortho-imagery. DigitalGlobe has partnered with PhotoSat Information Ltd. to produce elevation datasets over rural areas of low vegetation using an innovative geophysical technology similar to 3D seismic processing that provides unprecedented accuracy from a satellite-based DEM.

Features and Benefits

Engineering-Grade Accuracy from Space

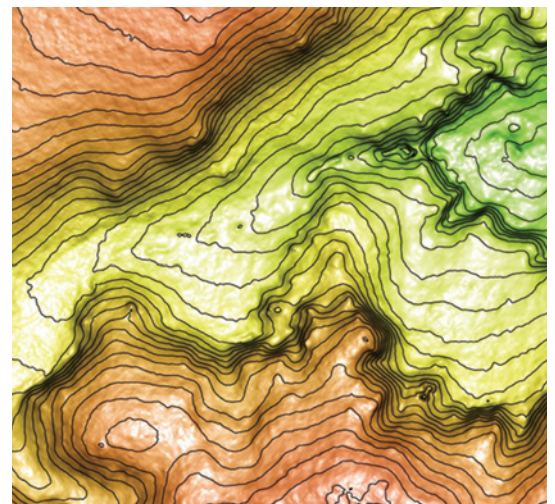
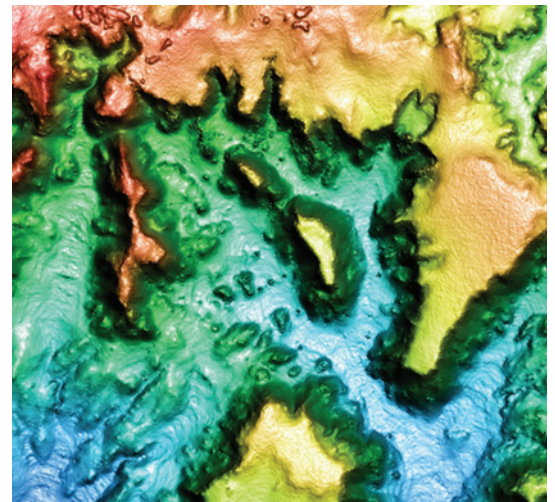
In leveraging PhotoSat's innovative geophysical technology, we provide superior quality for a satellite-derived product that is comparable to aerial technologies in detail and accuracy.

Global Reach

Obtain elevation models for any country in the world without local access challenges, such as permitting or in-country presence. Our worldwide reach allows more efficient mapping of areas where getting a plane in the air or a team on the ground is too costly, time consuming, or unsafe.

Current Information

Conduct your operations with recent data using DigitalGlobe control or customer provided high quality GCPs. We'll work with you to obtain the data within your date specifications to ensure it is as relevant as possible. Utilize our custom tasking capabilities or select imagery from our ImageLibrary.



Accurate elevation models derived from WorldView-1 stereo pair with ortho-imagery and contours.

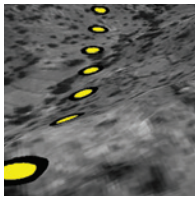
WorldView Elevation Suite

Specifications

Technical Specifications: DEM	
Vertical Accuracy	25-50 cm observed relative accuracy depending on ground control. 1 m absolute accuracy LE90
Post-Spacing	1 m
Horizontal Accuracy	4.1 m CE90
File Type	GeoTIFF format
Projection	Customer defined

Technical Specifications: Imagery	
Resolution	50 cm
Accuracy	4.1 m CE90, 1:4800 map scale
Color Type	Panchromatic (black and white) and Natural Color
File Type	GeoTIFF format
Projection	Customer defined

Applications



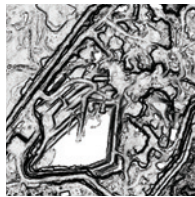
Exploration and Modeling

- Seismic surveys
- Geological mapping
- Hydrographic mapping



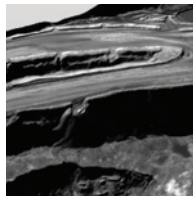
Asset Placement and Design

- Facilities
- Distribution lines
- Roads
- Cell towers
- Dams



Land Management

- Drainage analysis
- Flood plain analysis and modeling
- Wetland management
- Landslide risk assessment



Visualization and Simulation

- Aerospace
- Defense
- Line of sight analysis

Deliverables

- Digital Elevation Model in GeoTIFF format
- WorldView-1 panchromatic ortho imagery in GeoTIFF format
- Contours in shapefile format
- Image Support Data (ISD) files (Layout file, shapefiles, browse image, Product README, image metadata file, ephemeris file; attitude file; geometric calibration file; RPC00B file; license text file; tile map file)

Delivery Methods



Web-Based Delivery: FTP