

Diplomatic Facility Support Package

DATA SHEET 

The Diplomatic Facility Support Package, developed by CACI and DigitalGlobe, assists the evacuation of citizens and others by providing web-based access to consistently refreshed imagery and feature information of diplomatic facilities and important local infrastructure to identify intermediate staging bases and other areas for subsequent safe haven operations. The view of current data layers enables collaboration via virtual whiteboards and incorporates annotation tools for multiple users to view, edit, and share critical information.

Features & Benefits

GEOINT On Demand

Spend less time collecting information and more time assessing and making decisions.

Informed Response

Gain insight to see the full extent of the situation and effectively plan possible courses of action.

Respond Quickly

Identify high-risk areas, monitor the nature and extent of activities, plan evacuation routes, and manage key resources.

Historic Operational Context

Subscribers understand the extent and scope of an event.

Relevant Content

View and share the most recent high-resolution imagery, feature information, GeoRSS feeds, and points of interest.

Community Sourcing

Create a common operating picture to plan, develop, and implement crisis response.

Broad Reach

DigitalGlobe's constellation of satellites ensures consistent updates of important areas around the globe.

Connect Seamlessly

Connect securely using standard web browsers with powerful encryption. Get fast and protected access to high-resolution imagery and feature information in one location.

Secure Online Delivery

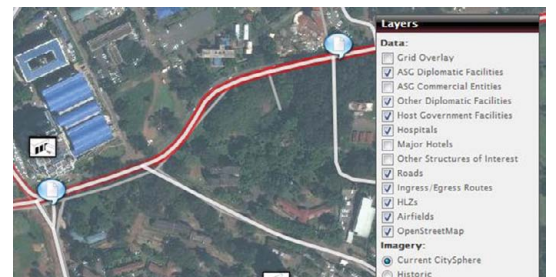
Authorized users securely connect using the CACI Freedom Web® platform to organize their response and collaborate among teams.



Integration: Feature information is overlaid on updated high-resolution imagery



Collaboration: Up-to-date information is added by and shared among authorized users



Customization: Multiple layers of map data are easily added and removed for specific situations

Diplomatic Facility Support Package

Specifications

Satellite Sensors	WorldView-2, WorldView-1, QuickBird
Portal Access	Freedom Web® from CACI
Regular Updates	Refreshed every six months
Image Quality	Advanced Ortho Series Vision Premium Mapping+ specifications
Feature Information	Modeled after Digital Image City Maps
Temporal Accuracy	90% of pixels are refreshed every six months

Easy-to-use

Diplomatic Facility Support Package uses CACI's Freedom Web® to provide secure and confidential access to updated information. Using account credentials, subscribers access the portal for rapid dissemination of important updates and to coordinate activities.

Subscription Service

Regularly updated imagery and feature information depicting diplomatic facilities and related locations in key urban areas.

Initial Diplomatic Facility areas are in Africa.

Domain Expertise

Combined geospatial and operational experience of DigitalGlobe and CACI.

Points of Contact

DigitalGlobe, Inc.
John Lucier
303.684.4868
jlucier@digitalglobe.com

CACI
Scott Simmons
970.224.4996
scsimmons@caci.com

