

Advanced Elevation Series

From city planning to flood mapping, many industries require the use of high-resolution elevation models to complete projects. DigitalGlobe's Advanced Elevation Series produces high accuracy Digital Surface Models and Digital Terrain Models that serve as key building blocks for successful exploration, engineering, land management, and simulation. AES allows users global access to customized models delivered directly to their desktops with numerous product configuration options for accuracy, resolution, type, and format.

Features and Benefits

Focus on Core Business Functions

Advanced Elevation Series does not require specialized hardware, software, or staffing expertise to create and process elevation models, allowing more time for users to focus on core business functions.

Global Access

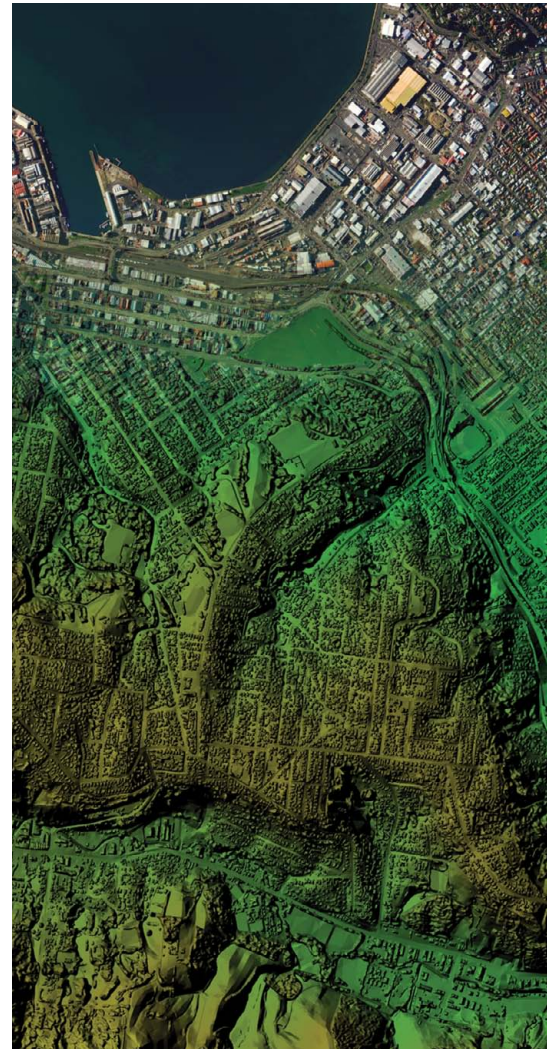
Now customers can have access to global elevation data without local challenges, such as permitting or in-country presence. DigitalGlobe's worldwide reach enables more efficient mapping of areas where getting a plane in the air or a team on the ground is too costly, time consuming, or unsafe.

One Stop Shop

Bundling DigitalGlobe's Advanced Ortho imagery with the Advanced Elevation Series provides users with uniformity in quality and accuracy, as well as reduces vendor management costs.

Optional Processing

DigitalGlobe has developed a number of additional processing options to enhance the Advanced Elevation Series. Whether the project involves hydro-enforcement, road-flattening, contours, or shaded relief, users can benefit from all of the additional processing as needed.



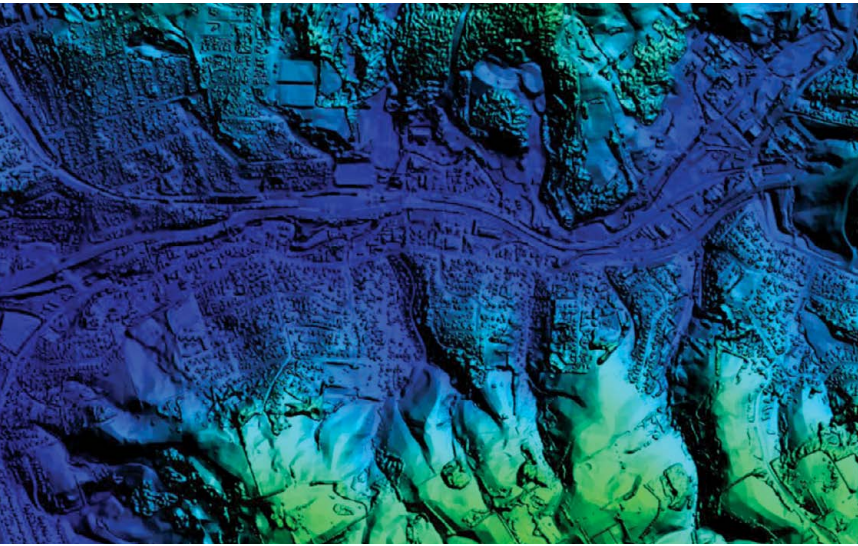
Dunedin, New Zealand
Collected June 6, 2011

Advanced Elevation Series

Product Levels

Advanced Elevation Series					
Mapping Elevation Product		Precision Elevation Product		Very High Precision Elevation Product	
Uncontrolled DSM	Uncontrolled DTM	Controlled DSM	Controlled DTM	VHP DSM	VHP DTM

Specifications			
Product Accuracy	Mapping	Precision	Very High Precision
Resolution	8 m	4 m	2 m
Relative Vertical¹ (LE90)	5 m	2 m	1 m
Absolute Vertical¹ (LE90)	8 m	4 m	2 m
Relative Horizontal (CE90)	8 m	4 m	2 m
Absolute Horizontal (CE90)	10 m	5 m	3 m



DSM shaded relief of Dunedin

Deliverables

- 32-bit signed floating GeoTiff file
- ISO 19115 metadata

Optional Processing

- Hydro enforcement
- Road/linear feature flattening
- Contour
- Shaded relief
- Contours in shapefile format

Delivery Methods



Media Delivery: Firewire



Web-Based Delivery: FTP

¹ The vertical accuracies are based on low to medium relief areas that generally have a slope less than 30%. For rugged areas that have a consistent slope >30%, the values above can be scaled by 1.5.

All imagery complies with U.S. regulation.