



About Us



With DigitalGlobe's world imagery solutions, users can have accurate, high-resolution satellite images within their reach. We begin with the most advanced commercial satellite constellation and aerial network, capable of collecting over 700 million km² of quality imagery per year. Use our constellation and products to collect key areas and build your own archive of images. Supplement with custom tasking. Then, make it all quick and easy to access, how and where you need it—online or offline, to your desktop, web application, or mobile device.

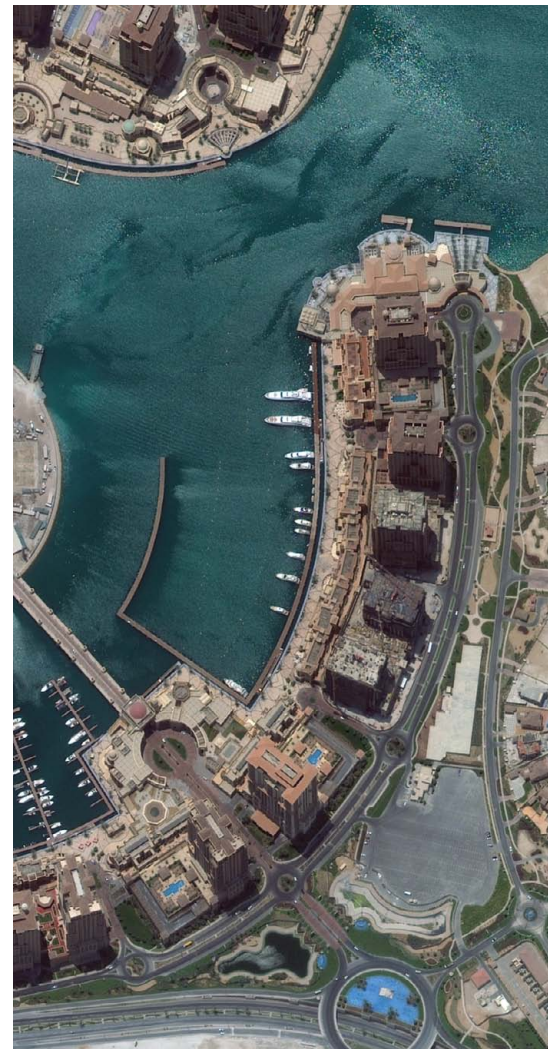
Your World Available On Demand

The vast DigitalGlobe ImageLibrary today contains over two billion km² of high quality imagery (<15% cloud cover, <20° off nadir), both current and historical. And the DigitalGlobe constellation has an unprecedented collection capacity of 700 million km² per year. That's why we can offer guaranteed coverage with regular refresh commitments for strategic places around the globe such as country capitals and other major cities worldwide, thousands of airports, ports and harbors, and millions of km² of coastlines and oil basins.

With the world's largest high resolution commercial imagery collection, you can rely on the depth of our ImageLibrary to provide the content you need without the expense or delay of custom satellite tasking.

For instant access, our online image platform combines our orthorectified satellite images with aerial views acquired exclusively for us, plus the best government data from USGS, NAIP, and NASA.

Incorporating high-resolution earth imagery into your projects or applications has never been easier. From asset management, change detection, exploration, navigation, online/wireless mapping applications, and more, we deliver a real world perspective you can rely on.



Doha, Qatar
Collected July 25, 2011

About Us

Collected with our Advanced Constellation

DigitalGlobe owns and operates the most agile and sophisticated constellation of high-resolution commercial earth imaging satellites. QuickBird was the first 60 cm commercial satellite and WorldView-1 is still one of the most agile commercial satellites ever flown. WorldView-2 adds to our impressive collection capacity and brings intraday revisit around the world. Our aerial collection sets the standard with wall-to-wall coverage at 30 cm resolution in the United States and Western Europe. And WorldView-3 is just around the corner with expected launch readiness in 2014.

DigitalGlobe's constellation features several technical advantages:

- Largest sub-meter, high-resolution commercial satellite constellation
- Highest collection capacity and archive
- Outstanding geolocation accuracy
- Largest high-resolution swath width
- Rapid targeting and in-track stereo collection
- Unprecedented intraday revisit

Specifications

Collection Systems	QuickBird	WorldView-1	WorldView-2	Aerial
Resolution	65 cm	50 cm	46 cm	30 cm, 60 cm CIR
Swath Width	16.5 km	17.6 km	16.4 km	-
Average Revisit	2.4 days	1.7 days	1.1 days	-
Slew Time	62 sec.	9 sec.	9 sec.	-
Spectral Bands	Pan + 4 MS	Pan	Pan + 8 MS	Natural and CIR
Accuracy*	25 m CE90	5.0 m CE90	5.0 m CE90	2.7 – 5.3 m CE90

* Specification at nadir on flat terrain

U.S. Regulation requires imagery to be resampled to a minimum of 50 m pan and 2.0 m multispectral.

Deliverables

DigitalGlobe world content is available on and offline and in a number of flexible pricing models, including a flat fee, subscription service, per transactions, or revenue share. Connect your GIS software directly to our cloud services and instantly retrieve the images you need.

- Orthos
- Monitoring Products
- Elevation Models
- Base Imagery

Delivery Methods



Media Delivery: DVD



Web-Based Delivery: FTP



Cloud Services

DigitalGlobe Cloud Services offers multiple implementation options and an extensive list of functionality, allowing you to embed imagery directly into your geospatial applications. We provide a dynamic API, tile API, and WMS services based on the OGC standard.

- **Web Feature Service: WFS**
- **Web Map Service: WMS**
- **Web Map Tile Service: WMTS**
- **Web Coverage Service: WCS**
- **EarthService™**
- **ImageConnect**

DS-About Rev 10/11